

DAM:

*GCH ROWE'S RAVEN FLORA
8*M*

Linear Appraisal - 3-02 92 EEEE

DHIR- 1-00 292 1810 47 44

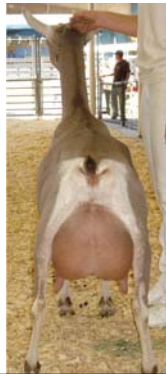
1-11 284 2590 69 74

Show Results:

- 2x GCH, 1xBOB in 2007



Third
Generation
Excellent.



One of four
Excellent
paternal
siblings.

Other Excellent Raven daughters:
GCH Rowe's Raven Susan 3-03 91 EEEE
 1-11 286 3120 73 82

Rowe's Raven Sierra 3-03 90 EEVE
 2-00 305 3840 97 94

Rowe's Raven Rootbeer 3-03 91 EEEE
Owned by Jake Carlson

SSS : +++B DIONYSIUS CARMELA'S SAN MARTIN VG88

SS : GCH +++B CANYON-VIEW MARY'S MAESTRO EX91

(Premier Sire '99 Nat'l Show, Sire of '99 Nat'l Champ GCH
Rowe's Maestro Margaret 7*M 5-05 93 EEEE)



SSD : GCH CANYON VIEW MARY IN THE MORNING 4*M EX92

S : GCH ++*B ROWE'S MAESTRO FALCON 92

SDS : GCH ++*B EDER'S KEYNOTE EX 91

SD : GCH ROWE'S KEYNOTE FAUNA 7*M EX92

SDD : SG ROWE'S FENIX FLORA 6*M EX 92

Lifetime DHIR: 3181d 35,360m 1071f 957p

ROWE'S FALCON FAITH

DSS : GCH +B LITTLE*CREEK LCWT SNOWBUCK V87

DS GCH +B ROWE'S SNOWBUCK RAVEN VG87

DSD : SGCH ROWE'S LANDMARK ROBIN 7*M EX93

DSDD : GCH ROWE'S MAESTRO ROSEPETAL 6*M EX 90

D : GCH ROWE'S RAVEN FLORA 8*M EX92

DDS : GCH+*B ROWE'S MAESTRO FALCON EX92

DD : GCH ROWE'S FALCON FRANCINE 7*M EX91

DDD : SG ROWE'S FENIX FLORA 6*M EX 92

Rowe's Toggenburgs

CAEV Prevention; Scrapie FCP (Status Date 10/02)

Joan Dean Rowe, DVM
 Charles W. Rowe
 P.O. Box 627
 Esparto, CA 95627
 530.796.2249

www.rowetoggs.com

ADGA Spotlight Sale
 Fort Collins, CO – Oct. 20, 2007



Presents...

*Rowe's Falcon
 Faith
 AT1402167*

*Faith represents
 generations of excellence in
 type and production*



Not able to attend the sale?

You can still bid on Faith!
 Contact ADGA for information on
 proxy bidding. www.adga.org

SIRE:

*GCH +*B Rowe's Maestro Falcon*

Linear Appraisal- 5-06 92 EEE



Note: carries black genetics

Milking Falcon Daughters:

GCH Rowe's Falcon Francine 7*M
MATERNAL GRANDDAM

- **LA- 5-03 91 EEEE**
- **DHIR- 3-1 281 2850 86 75**



GCH Rowe's Falcon Suzette 2*M

- **LA- 5-03 93 EEEE**
- **DHIR- 3-0 305 3250 78 77**



Great Grand-dam:

*SGCH Rowe's Landmark Robin 7*M*

Linear Appraisal- 7-03 93 EEEE

DHIR- 1-11 286 3340 92 81 (Top Ten)
5-10 285 3130 84 76

Standout Show Results:

- **4x GCH California State Fair**
- **2x BDIS California State Fair**
- GCH 2005/6/7 Sonoma County Fair. BIS '07 Sonoma Co. Fair
- 5 times BDIS @ REDGA Memorial Show.
- 3x BDIS 2006



PATERNAL GRANDDAM:

*GCH Rowe's Keynote Fauna 7*M*

Linear Appraisal- 7-5 92 EEEE

DHIR- 7-11 305 3800 83 90

Standout Show Results:

- RGCH 2002 Ca State Fair
- RBUB 2005 Ca State Fair



ADDITIONAL INFO:

1st Place Dairy Herd 2006 Sonoma County Fair



From Left: Great granddam: SGCH Robin EX93, Half sister: GCH Suzette EX93, Dam's Pat. sister GCH Susan EX91, full sister to dam's sire GCH Rachel EX90.

Supreme Best 3 Females 2005-6 Sonoma Co. Fair. Robin Supreme Champion 2007 SCF

PATERNAL SISTER: CH

ROWE'S FALCON REBECCA II



Mat.Grandsire's Full Sister: GCH Rowe's Snowbuck Redwing 8*M



