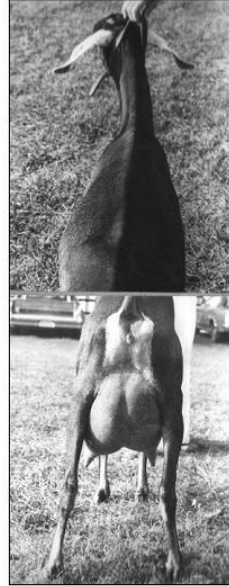
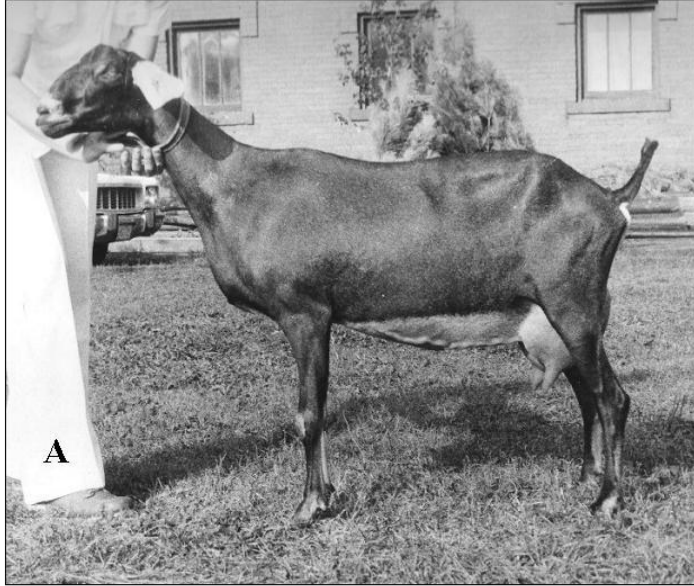
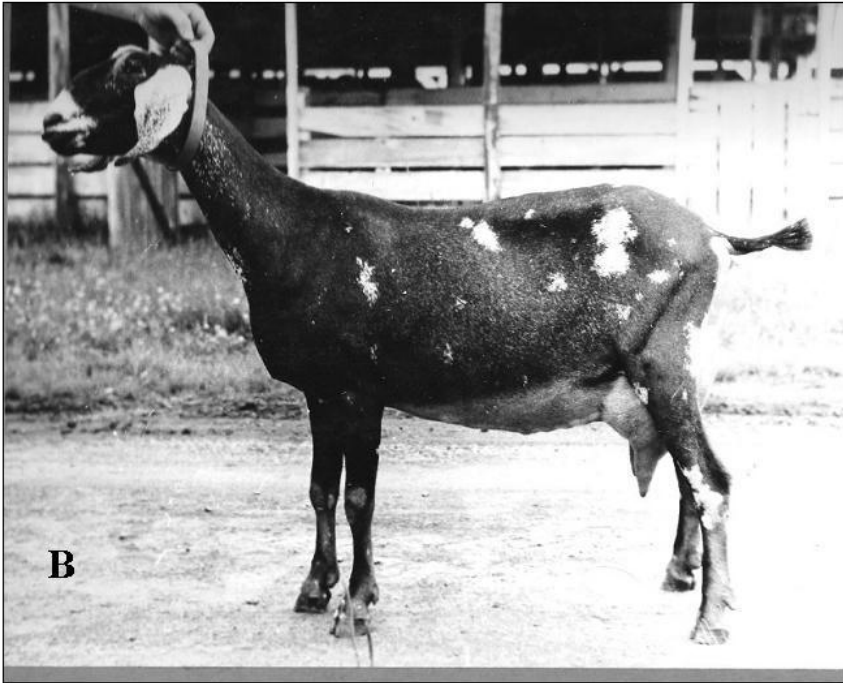
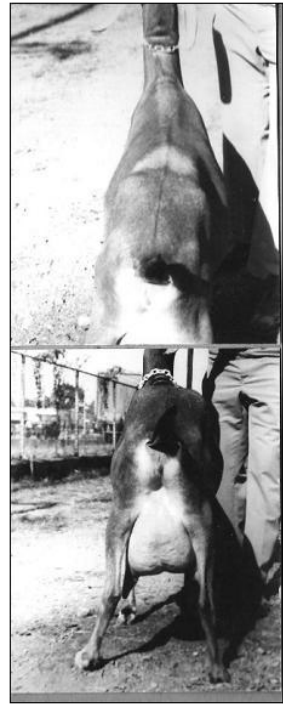
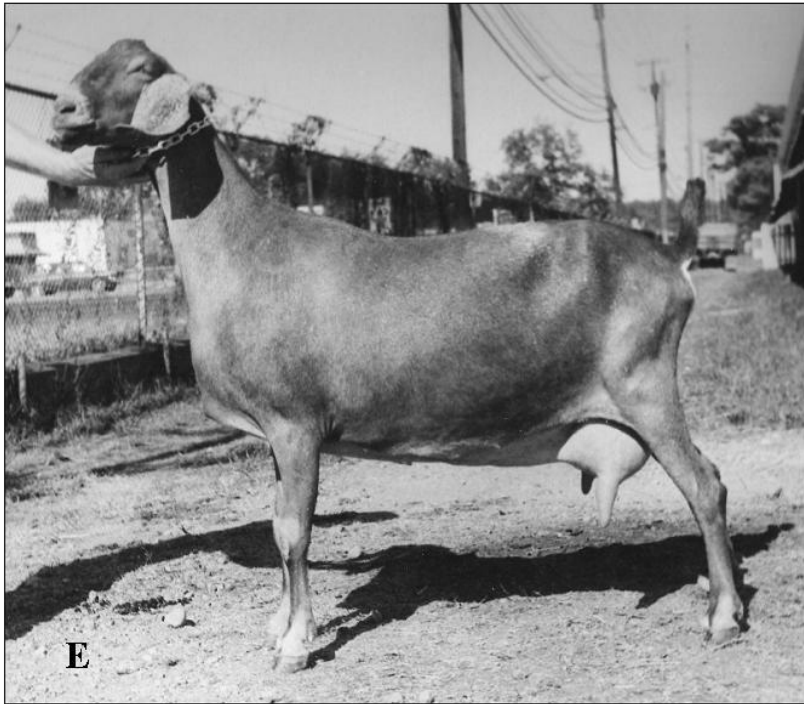
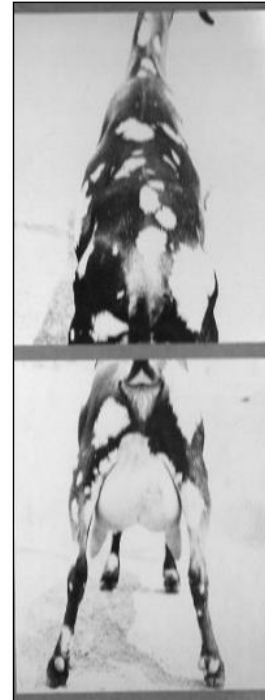
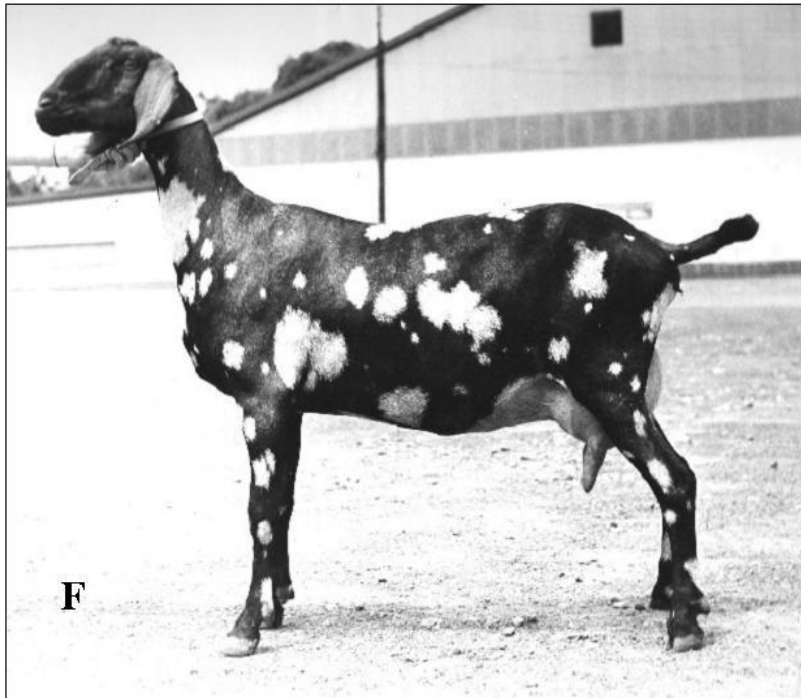


NUBIAN 2-3 YEAR OLDS
(This is a larger class with side and rear views)









I have placed this class of _____ (age)
 _____ (breed)
 _____ (milkers)

One is placing over Two because she has an advantage in:
 _____ (category); _____ (specific) & _____ (specific)
 _____ (category); _____ (specific) & _____ (specific)
 One grants to Two _____ (specific)

Two is placing over Three with her advantage in:
 _____ (category); _____ (specific) & _____ (specific)
 _____ (category); _____ (specific) & _____ (specific)
 Two grants to Three _____ (specific)

Three is placing over Four for her advantage in:
 _____ (category); _____ (specific) & _____ (specific)
 _____ (category); _____ (specific) & _____ (specific)
 Three grants to Four _____ (specific)

Four is placing over Five for her advantage in:

_____ (category); _____ (specific) & _____ (specific)
_____ (category); _____ (specific) & _____ (specific)

Four grants to Five _____ (specific)

Five is placing over Six for her advantage in:

_____ (category); _____ (specific) & _____ (specific)
_____ (category); _____ (specific) & _____ (specific)

Five grants to Six _____ (specific)

Six should be commended for her:

_____ (specific)

Based on what you can see in this class, make a placing and then write out a set of reasons using the [ADGA Scorecard](#) and the [Suggested Terminology](#) for reference. Put these in an email and send it to Doug Thompson at dthompson@acegroup.cc. He will review your reasons and send back a reply, along with the official placing and reasons.